

FEATURES:	LifeLamp DETECTOR \$24 - \$29 "BRONZE"	LifeLamp DETECTOR \$33 - \$42 "SILVER"	LifeLamp DETECTOR \$47 - \$65 "GOLD"	Base Station \$110 System-1	Base Station \$145 System-2	Lite-Talk \$47 - \$65 INTERCOM
STYLE- Edison Basic	•	•	•			•
STYLE- Flood	•	•	•			•
STYLE- Recessed	•	•	•			•
STYLE- Track		•	•			•
STYLE- Nightlight		•	•			•
STYLE- Other		•	•			•
SMOKE DETECTION	•	•	•			
CARBON MONOXIDE DETECTION	•	•	•			
GAS (Natural or Propane)		•	•			
GAS (Radon)		•	•			
GAS (other)		•	•			
COMBINATION DETECTORS		•	•			
MASTER		•	•			
SLAVE		•	•			
NETWORK via sound	•	•	•	•	•	•
NETWORK via Bluetooth		•	•	•	•	•
NETWORK via Bluetooth (expanded range)		•	•	•	•	•
MOBIL APP (via Wi-Fi)		•	•	•	•	•
(alarm) SILENCE COMMAND "SHUT-OFF"	•	•	•	•	•	•
REPEAT ALARM - GREEN STROBING	•	•	•	•	•	•
RECHARGEABLE BATTERY	•	•	•	•	•	•
LOW BATTERY WARNING	•	•	•	•	•	•
UNIT TEST	•	•	•	•	•	•
SYSTEM WIDE TEST & QUIRE		•	•	•	•	•
VOICE RECOGNITION-COMMAND & CONTROL:		•	•	•	•	•
ON, OFF, DIM, BRIGHT,		•	•	•	•	•
PRESET, NIGHT, EMERGENCY		•	•	•	•	•
(modes) AUTO, TIMER, NULL		•	•	•	•	•
Lite-Talk INTERCOM		•	•	•	•	•
RECORD/PLAY MESSAGE/PHONE CALLING		•	•	•	•	•
PROGRAMMABLE - BASIC		•	•	•	•	•
PROGRAMMABLE - FULL FEATURED		•	•	•	•	•
(message) STABLE STATE: "ALL SYSTEMS OK"		•	•	•	•	•
SPEECH ANNOUNCING ALARM		•	•	•	•	•
PROGRAMMABLE - EXPANDABLE		•	•	•	•	•
INTERCOM- PHONE CALLING LINK		•	•	•	•	•
USB PORT		•	•	•	•	•



LIFE LAMP DETECTOR

- High Efficiency LED Lamps and Fixtures
- Fully Integrated Smoke, Carbon Monoxide and Gas Detection
- Emergency Exiting (safe-way out) Signaling
- Power Outage Low-Level Lighting
- Fully Integrated Rechargeable Battery
- Voice Command & Control

The Only Lighting System That Could Save Your Life!™

Patent: US 9,747,763 B1 Issued and Patents Pending



Contact:

Kevin Grupp President

716.913.9170

kgrupp@athenapatents.com

www.lifelampdetector.com

FOR VIDEO & MORE INFORMATION VISIT:
lifelampdetector.com



Copyright © 2017 by Athena Patent Development LLC
41 Ward Road, Lancaster, New York 14086
All Rights Reserved - Patents Issued and Patents Pending



High Efficiency
Led Lamp
(Normal Lighting)

Safe-Way Out
Signaling
(Danger Nearby
Safe Exiting)

Smoke Detection
State
(Immediate
Danger Area)

Gas Detection
State
(Immediate
Danger Area)

Carbon Monoxide (CO)
Detection State
(Immediate
Danger Area)

The Life-Lamp Detector™ Lighting System also warns you of:

- Smoke/Fire Detection
- Carbon Monoxide (CO) Detection
- Gas (natural, propane, radon) Detection



Smoke/fire is detected in one area of a home, the lamp will alarm with both strobing RED & WHITE light while audibly sounding the siren, giving notice of an immediate danger.

In the upstairs rooms, the REPEAT alarm functions in GREEN & WHITE strobing light; giving notice that a danger is nearby, and, indicating a safe exiting route from the home.



Smoke/Fire Detection Lamp in State of Emergency
is detected, the lamp will alarm with both strobing RED and WHITE light while audibly sounding the siren – giving notice of an immediate danger.



Carbon Monoxide Detection Lamp in State of Emergency
(CO) is detected, the lamp will alarm with both strobing AMBER and WHITE light while audibly sounding the siren – giving notice of an immediate danger.



Gas Detection Lamp in State of Emergency
Natural Gas, Propane, Radon, etc.) is detected, the lamp will alarm with both strobing BLUE and WHITE light while audibly sounding the siren – giving notice of an immediate danger.



All Lamps Emergency Nearby
If another device is alarming, and in range of its sound, the lamp will REPEAT that an alarm was detected, with both strobing GREEN and WHITE light while audibly sounding the siren, giving notice of a danger is nearby.



Lamp Normal State
Energy efficient LED Light.



If the battery gets low, the Life-Lamp DETECTOR will 'chirp' with a very short audible sound to let you know.

No need to replace the battery, just turn-ON the lamp for awhile to charge the battery and the chirping will immediately stop.

The Life-Lamp Detector™ Voice Command feature

Burning something in the kitchen is the biggest 'false' tripping of smoke detectors. And with conventional detectors, the only remedy is to remove the battery to get some peace...

NOT ANY MORE...
with the Life-Lamp DETECTOR

You just verbally tell it to **"shut-OFF"** and the device will suspend the alarm.



The Life-Lamp Detector™ COMMAND CENTER

A home can have as many Base-Station as desired. Place them in the Master Bedroom and areas that are crossroads of activity.

Easy to program and identify each Life-Lamp DETECTOR into the network.

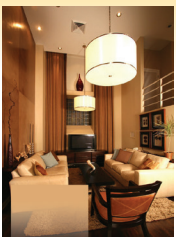
The Base-Station communicates in a variety of ways with all Life-Lamp DETECTORS in the network, and relays events to mobile apps.



Life-Lamp Detector™ High Efficiency LED Light Bulb

Voice Commands: "On, Off, Dim, Bright, Preset Night, Emergency"
Operating Modes: Auto, Timer, Null

If the power goes out your not left in the dark. Each Life-Lamp Detector has a lithium rechargeable battery, you can still turn the light on at 20%



Use all your existing fixtures and lamps. You're just replacing the bulbs



Life Lamp Detector comes in many styles